



FROM LEFT TO RIGHT: LAURA CUSACK, BLAYNEY MPS; STEVE WILLIAMS, TAYLOR CONSTRUCTION; AUNTY NYREE REYNOLDS, WIRADJURI ELDER; AMANDA BOCK, HEALTH INFRASTRUCTURE; AND FIONA BENNETT, WESTERN NSW LHD BOARD TURN THE FIRST SOD ON THE BLAYNEY MPS REDEVELOPMENT SITE

Community sod turn event marks start of main works

Construction is now underway on the Blayney Multipurpose Service (MPS) Redevelopment!

A community sod turn event was held on 15 October to mark the start of the main works.

Over 50 people attended the sod turn event, including representatives from Western NSW Local Health District, Health Infrastructure, the project team and contractors, MPS staff and aged care residents, and community members, including representatives of Blayney Health Council.



The afternoon event commenced with a Welcome to Country by Wiradjuri Elder Aunty Nyree Reynolds, who also worked with some of the aged care residents to share a special message of 'Yindyamarra', which means "Respect, Be Gentle, Polite, Honour and Do Slowly", and reflects what the residents' new home will mean to them and to everyone who comes into it.

Following the sod turn, resident Bert and Acting Health Service Manager Laura Cusack cut the celebratory cake and everyone enjoyed a chat and refreshments prepared by the MPS.



THE WESTERN NSW LHD TEAM AT THE SOD TURN



RESIDENT BERT AND ACTING HEALTH SERVICE MANAGER LAURA CUSACK CUT THE CAKE TO CELEBRATE THE START OF CONSTRUCTION



SOME OF THE RAC RESIDENTS SHARING THE SPECIAL YINDYAMARRA MESSAGE



EVENT PROCEEDINGS



New Artist's Impression released

A new Artist's Impression has been released for the Redevelopment.

One of the main features of the MPS design is one new entry to replace the three entries in the current MPS, making wayfinding a lot easier.

The render shows a bright and modern space filled with natural light and warm tones, making it a safe and welcoming place for residents, patients, visitors and staff.

Builder appointed

Taylor Construction Group has been engaged to build the new Blayney Multipurpose Service following a competitive tender process.

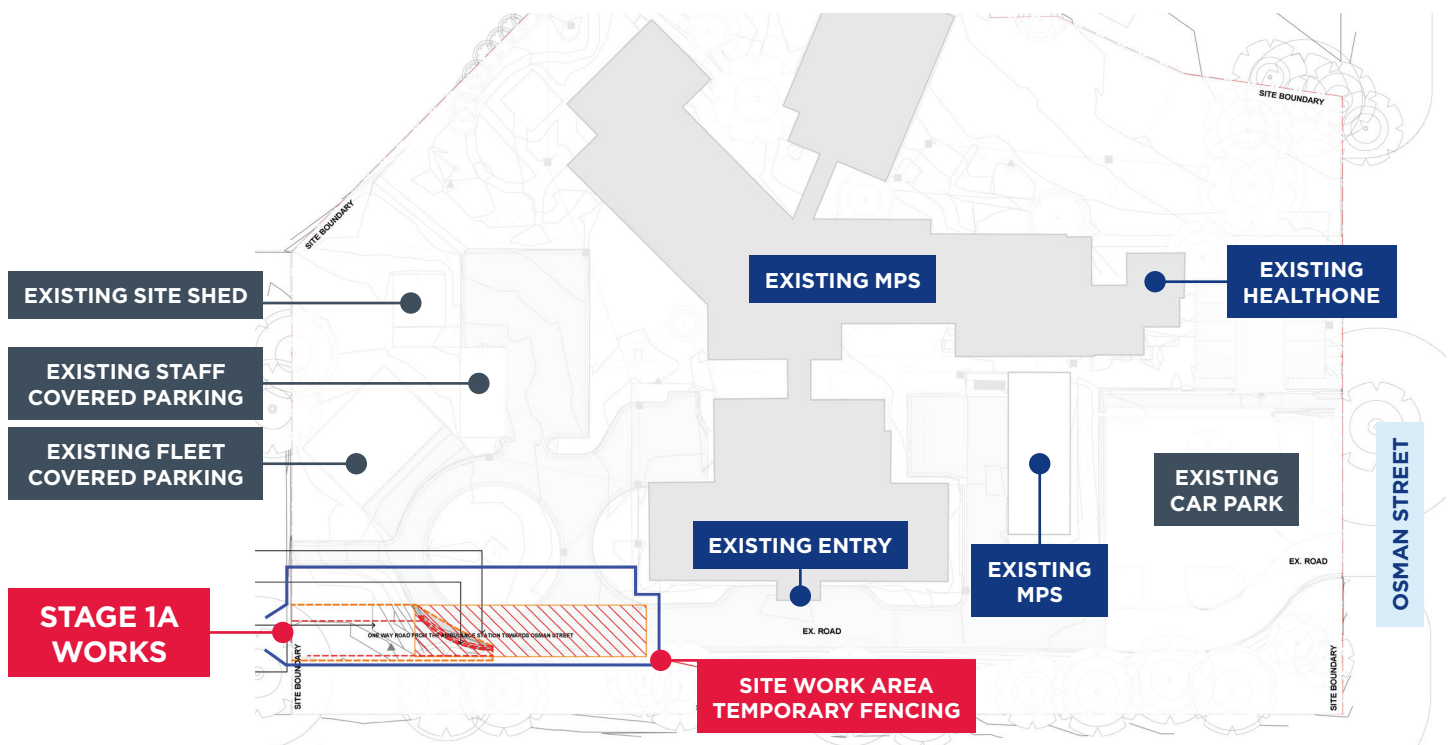
They are an experienced contractor in the health sector, with recent projects including the Campbelltown Hospital Redevelopment, Freshwater Mental Health Unit within the Long Bay correctional complex, and Bathurst Hospital MRI Imaging Department Extension.

Taylor will reach out to the local community including trades, businesses, and suppliers about opportunities to be involved in construction for the redevelopment.



More information about how to get involved will be shared in the coming months.

They are looking forward to working on the project and bringing the redevelopment to life.



Construction update: Stage 1A now underway

The Blayney MPS Redevelopment will be built in stages to ensure as little disruption as possible to the provision of clinical services.

Stage 1A has now commenced at the rear of the MPS, and includes site establishment, the installation of site fencing, work to services, and the construction of a new access road. This work will have some impact on staff parking, but no impact on MPS access, patient/

visitor parking or operations.

Stage 1A is expected to be complete by the end of the year, with Stage 1, the construction of the new Residential Aged Care Unit and Inpatient Unit, commencing in early 2025.

Staff, residents, neighbours and the community will be kept informed of progress and any impacts of construction as it progresses.



Project team welcomes new Project Director

A new Project Director has joined the Blayney MPS Redevelopment team. Chris Illeris is replacing Arjuna Thiru-Moorthy, who has been with the project since the beginning and is now moving into another role at Health Infrastructure.

Chris has more than three decades of experience in the design, leadership, and delivery of complex, mission-critical facilities within the health sector and has delivered a comprehensive range of projects across Australia, Asia Pacific and Europe that enhance the health and wellbeing of entire communities.

Chris is looking forward to directly improving health and aged care services for the Blayney community, acknowledging rural healthcare settings often face unique challenges, from staffing to resources.

“Being part of a solution that improves healthcare accessibility in these regions can be particularly meaningful as the infrastructure we will build will serve the community for years to come, improving both patient care and community well-being,” Chris said.

Welcome to the team Chris and a special thank you to Arjuna for leading the project to the construction stage!



Take Five with Fiona Ostini Redevelopment Change Manager, Blayney MPS

What does your role involve?

I work as part of the Local Health District team supporting the Blayney MPS Redevelopment project. The role involves helping to design and build the spaces we need as well as working with staff to make sure we can use the new spaces in the best way possible.

How involved have you been in the planning and design of the new Blayney MPS?

I've been involved since the start of the redevelopment, and I'm keen to see the project through to completion.

How involved will you be in the delivery of the new MPS?

I will be very involved in the delivery – from now right through the build to planning the move from one site to the next. I will also assist after we move in with making sure we can adjust to how we work in the new spaces.

What's been your favourite thing about being involved with the project so far?

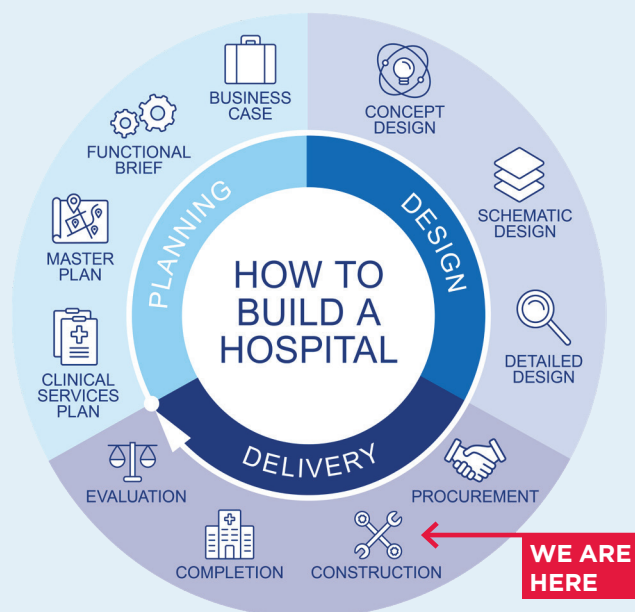
Being able to advocate for the District and community needs, and seeing something positive grow from all the work.

From your perspective, what are the challenges in a project like this?

Trying to consider everything needed and including all perspectives.

What do you think will be the main benefits of the redevelopment for staff?

Single rooms in the Rural Aged Care facility and easier entry, and a new HealthOne to attract and retain staff.



About the redevelopment

The Blayney MPS Redevelopment project is being delivered as part of the NSW Government's \$297 million Multipurpose Service Program to deliver health facilities across smaller rural and remote communities.

It will deliver a new purpose-built and modern facility to improve health and aged care services for the people of Blayney.

The new facility will be built on the existing Osman Street site and will include a new residential aged care wing with single rooms and bathrooms, more inpatient unit beds, increased chair-based services and HealthOne rooms room for future expansion.

We thank Blayney MPS staff, residents and the community for their patience and support of this important project.

Health Infrastructure, Western NSW Local Health District and the Blayney Multipurpose Service acknowledge the Traditional Custodians on whose lands the project stands and pays respect to the peoples of the Wiradjuri Nation, the Traditional Owners of this land.

More information

For more information about the Blayney MPS Redevelopment please contact the project team at:

Phone: **(02) 9978 5432**

Email: HI-BlayneyMPSRedevelopment@health.nsw.gov.au

Website: mps.health.nsw.gov.au